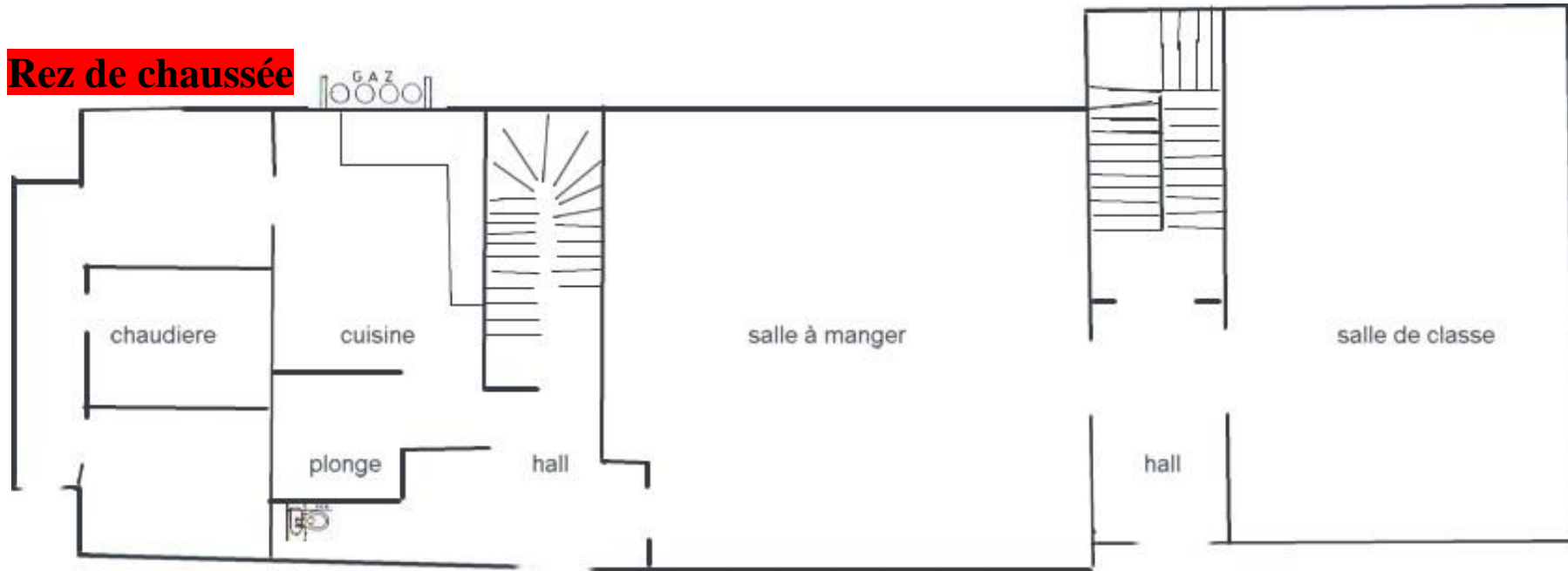
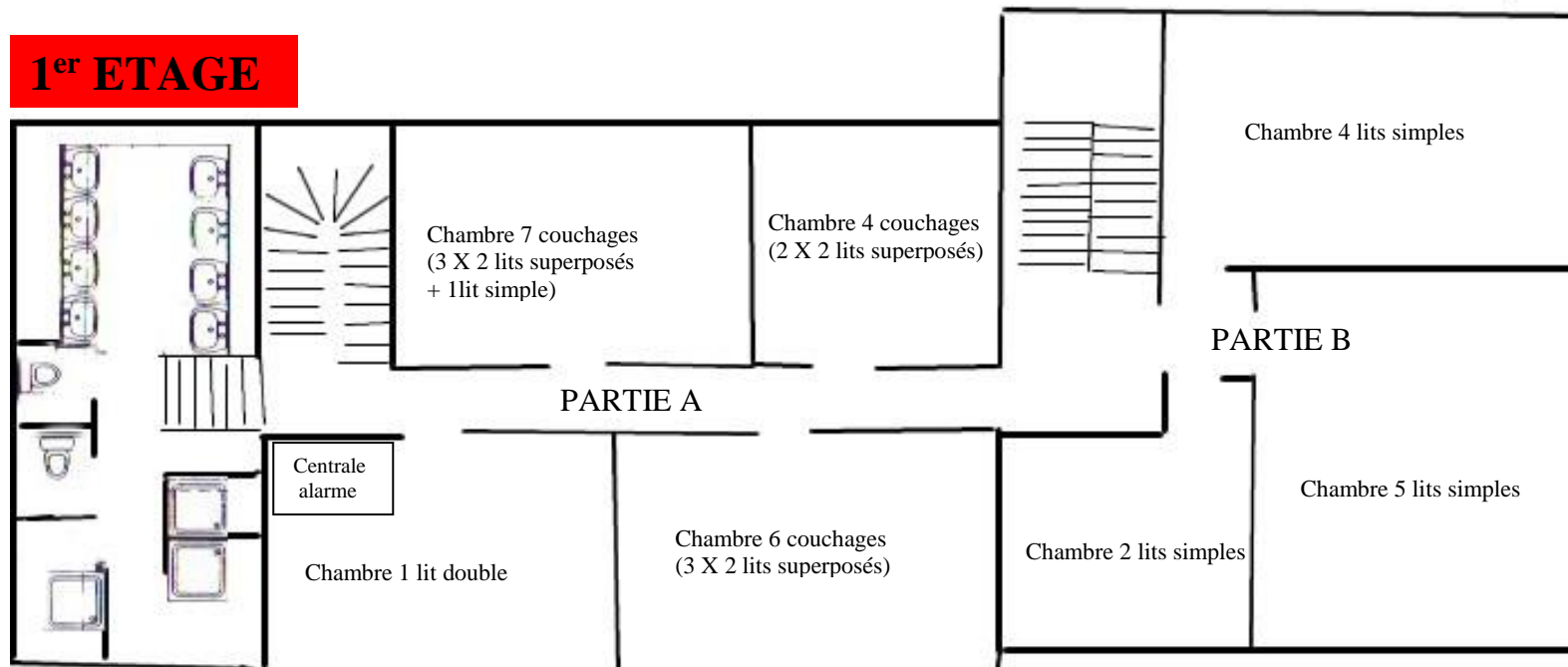


PLAN DU CENTRE DU GIRALDES

Rez de chaussée



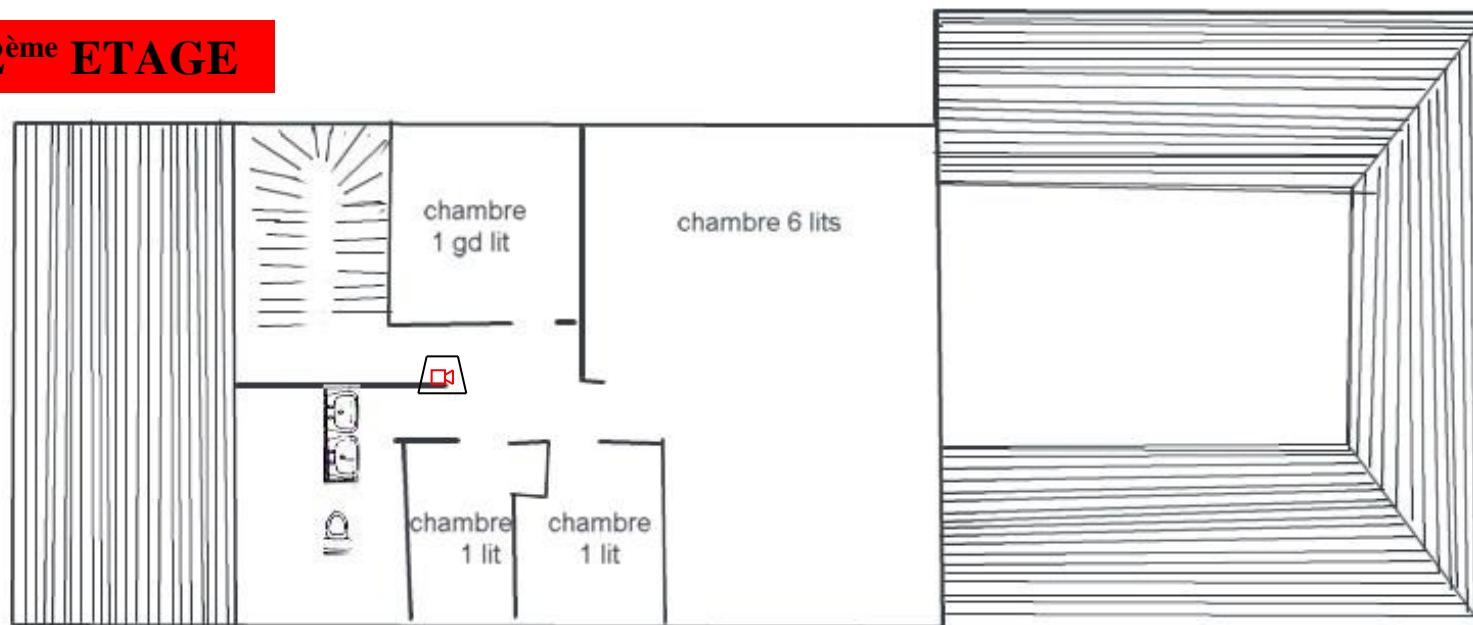
1^{er} ETAGE



7 chambres au 1^{er} ETAGE 1 lit double, 12 lits simples, 8 X 2 lits superposés

4 chambres au 2^{ème} ETAGE 1 lit double et 8 lits simples

2^{ème} ETAGE



PARTIE C